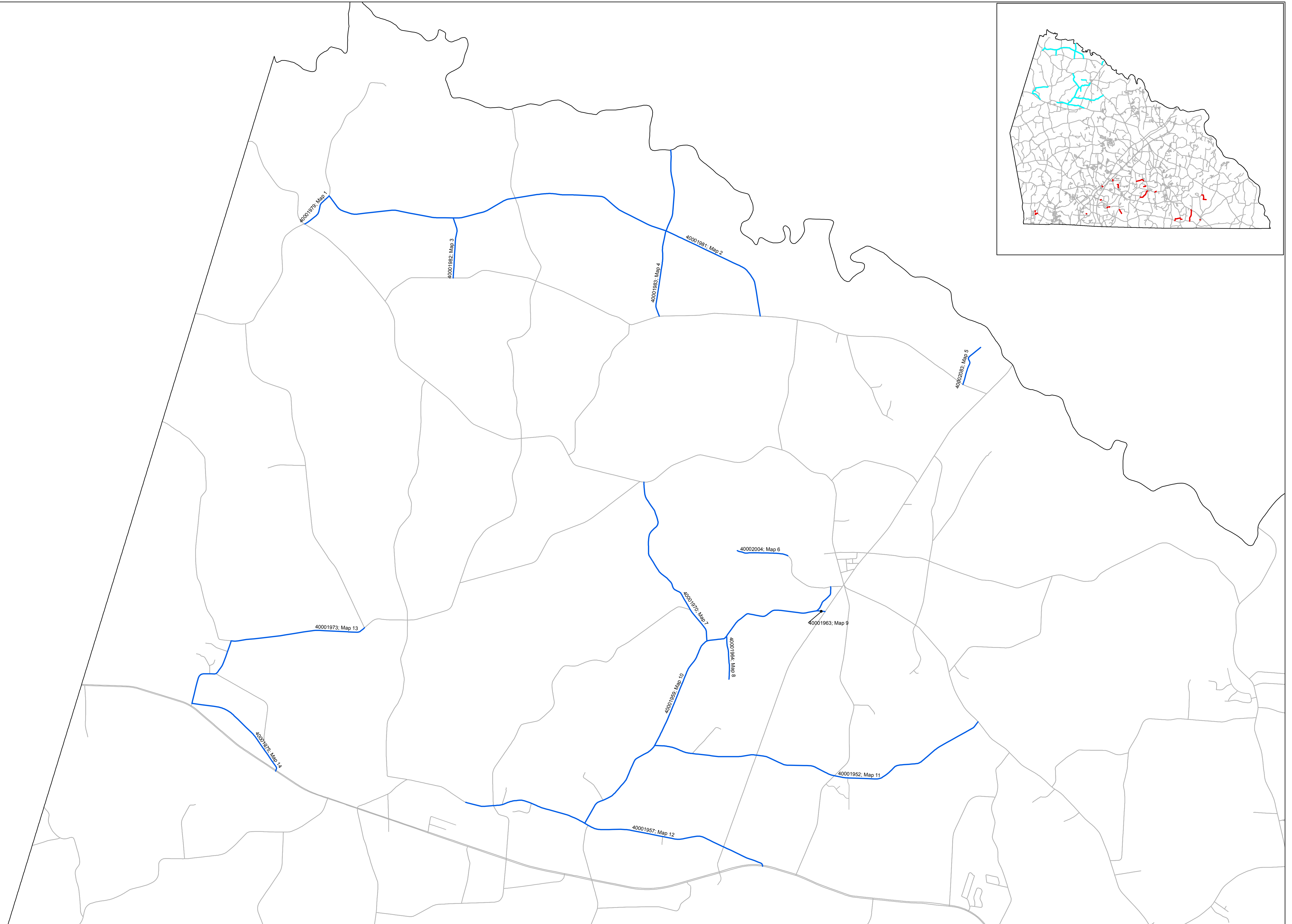
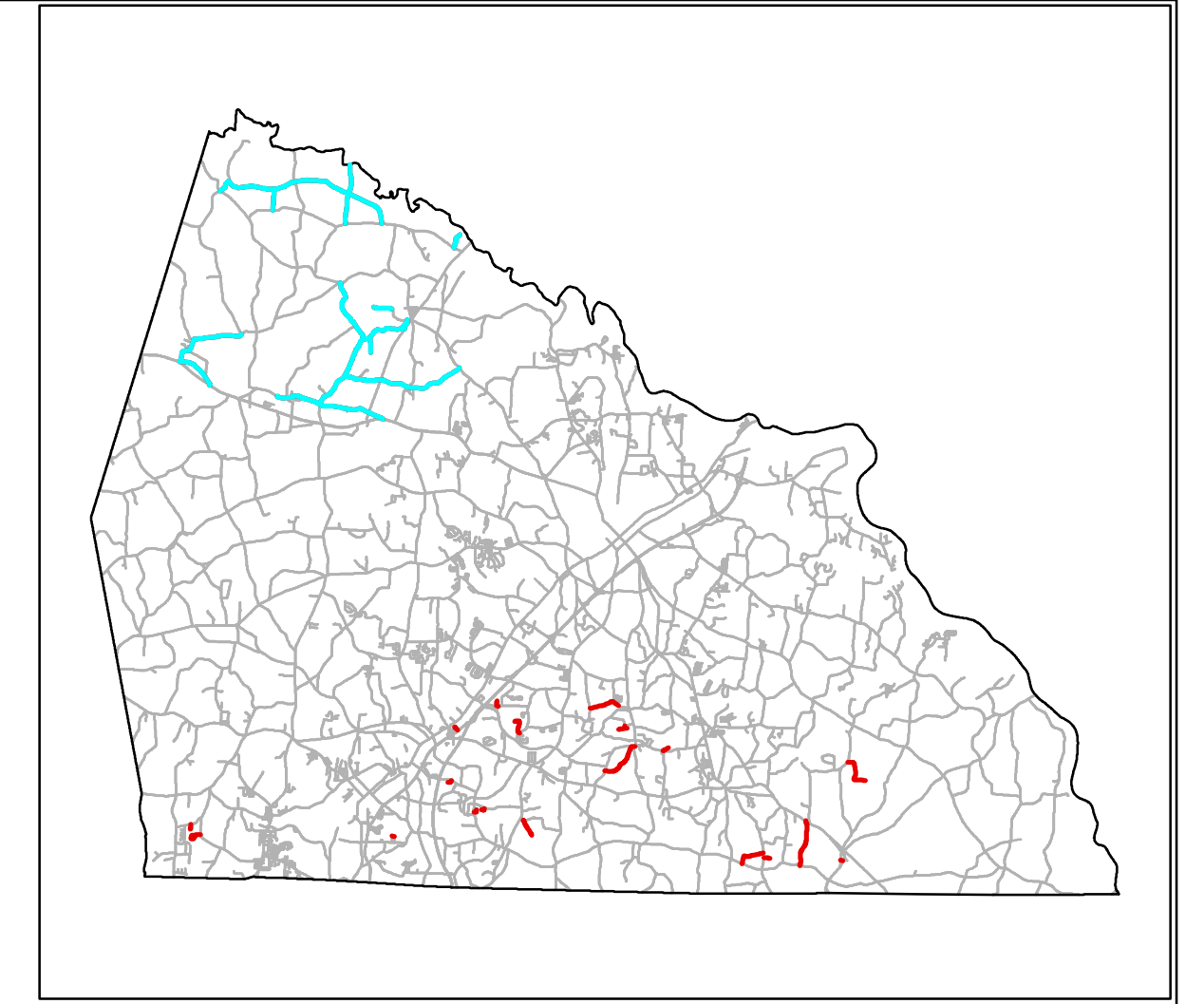


Project No	County	Map No	Route	Description	Lanes	Length		Width	Asphalt Surface Treatment, Split Seal	
						MI	FT		SY	GAL
9SP_20805.3	Rowan	1	SR 1979- DOOLEY ROAD	From SR 1003 (Cool Springs Road) To Iredell County Line	2	2.081	20	24,417	13,429	
		2	SR 1981- S. RIVER CHURCH ROAD/CHAFFIN ROAD	From SR 1979 (Dooley Road) To SR 1984 (Needmore Road)	2	5.676	20	66,598	36,629	
		3	SR 1982- BUD FOSTER ROAD	From SR 1981 (S. River Church Road) To SR 1984 (Needmore Road)	2	0.694	20	8,143	4,479	
		4	SR 1983- POWELL ROAD	From Davie County Line To SR 1984 (Needmore Road)	2	1.932	20	22,669	12,468	
		5	SR 2083- ERWIN TEMPLE CHURCH ROAD	From SR 1984 (Needmore Road) To Dead End	2	0.503	20	5,902	3,246	
		6	SR 2004- QUARRY ROAD	From RR Tracks To Dead End	2	0.590	20	6,923	3,807	
		7	SR 1970- CARSON ROAD	From SR 1959 (Woodleaf Barber Road) To SR 1003 (Cool Springs Road)	2	2.120	20	24,875	13,681	
		8	SR 1964- TOM BARBER ROAD	From SR 1959 (Woodleaf Barber Road) To Dead End	2	0.500	20	5,867	3,227	
		9	SR 1963- SHORT ROAD	From SR 1959 (Woodleaf Barber Road) TO NC 801	2	0.103	16	967	532	
		10	SR 1959- WOODLEAF BARBER ROAD	From SR 1957 (Old US 70 Hwy) To SR 2004 (Quarry Road)	2	4.320	16	40,550	22,303	
		11	SR 1952- THOMPSON ROAD/GODBAY ROAD	From SR 1959 (Woodleaf Barber Road) To SR 2048 (Woodleaf Road)	2	3.975	20	46,640	25,652	
		12	SR 1957- OLD US 70 HWY	From US 70 To Cleveland City Limit	2	3.649	18	38,533	21,193	
		13	SR 1973- THIRD CREEK CHURCH ROAD	From SR 1972 (Chenault Road) To SR 1975 (Old US Hwy 70)	2	2.483	16	23,307	12,819	
		14	SR 1975- OLD US HWY 70	From SR 1973 (Third Creek Church Road) To US 70	2	1.335	18	14,098	7,754	
		15	SR 1965- MILL STREET	From SR 2048 (Cool Springs Road) to NC 801	2	0.164	16	1,539	847	
		16	SR 1967- GYM STREET	From NC 801 to Dead End	2	0.127	16	1,192	656	
		17	SR 1969- STADIUM STREET	From SR 2048 (Cool Springs Road) to SR 1948 (Potneck Road)	2	0.290	16	2,722	1,497	
		18	SR 2716- HOMELAND DRIVE	From SR 1337 (Lentz Road) To End of Maintenance	2	0.164	20	1,924	1,058	
		19	SR 2720- HOMELAND DRIVE	From SR 1346 (Sercey Road) To End of Maintenance	2	0.134	18	1,415	778	
		20	SR 2704- WHISPERING PINE ROAD	From SR 2703 (Pineywood Street) To Dead End	2	0.082	18	866	476	
		21	SR 2703- PINEYWOOD STREET	From SR 1232 (Pine Ridge Road) TO SR 2704 (Whispering Pine Road)	2	0.081	18	855	470	
		22	SR 2644- ARCADIA ROAD	From SR 2573 (Rogers Road) To End of Maintenance	2	0.548	20	6,430	3,536	
		23	SR 2597- MYRTLE GOODNIGHT ROAD	From SR 2588 (Myrtle Goodnight Road) To Dead End	2	0.146	20	1,713	942	
		24	SR 2614- MEA ROAD	From SR 2548 (Ed Weavers Road) To Dead End	2	0.214	20	2,511	1,381	
		25	SR 2550- ROSEMONT ROAD	From SR 2547 (Safrit Road) To Dead End	2	0.582	18	6,146	3,380	
		26	SR 2530- LIPPARD ROAD	From SR 2532 (Glover Road) To Faith City Limit	2	1.001	20	11,745	6,460	
		27	SR 2018- FLEMING ROAD	From NC 801 to Dead End	2	0.096	20	1,126	620	
		28	SR 2046- MORRISON ROAD	From SR 1951 (Parks Road) to Dead End	2	0.300	20	3,520	1,936	
		29	SR 2562- JACKSON ROAD	From SR 1006 (Faith Road) To SR 2561 (Castor Road)	2	1.407	16	13,207	7,264	
		30	SR 2470- ROB WARD ROAD	From SR 2319 (Crescent Road) To Dead End	2	0.204	20	2,394	1,316	
		31	SR 2358- D. EARNHARDT ROAD	From SR 2338 (Emanuel Church Road) To SR 1221 (Old Beatty Ford Road)	2	0.889	20	10,431	5,737	
		32	SR 2427- AUSTIN STREET	From SR 2338 (Emanuel Church Road) To Dead End	2	0.196	18	2,070	1,138	
		33	SR 2349- ZION CHURCH ROAD	From US 52 To SR 1221 (Old Beatty Ford Road)	2	1.496	20	17,553	9,654	
		34	SR 2354- RUSSELL STREET	From SR 2353 (Baptist Church Road) To SR 2352 (St. Stephen Church Road)	2	0.081	16	760	418	
		35	SR 2365- WOODSON ROAD	From SR 2140 (Liberty Road) To End of Maintenance	2	1.099	20	12,895	7,092	
		36	SR 2588- MYRTLE GOODNIGHT ROAD	From US 29 Ramp to SR 2597 (Myrtle Goodnight Road)	2	0.243	20	2,851	1,568	
		37	SR 2589- MADISON ROAD	From SR 2588 (Myrtle Goodnight Road) To Dead End	2	0.103	16	967	532	
Total for Project						39.608		436,322	239,977	
Grand Total						39.608		436,322	239,977	

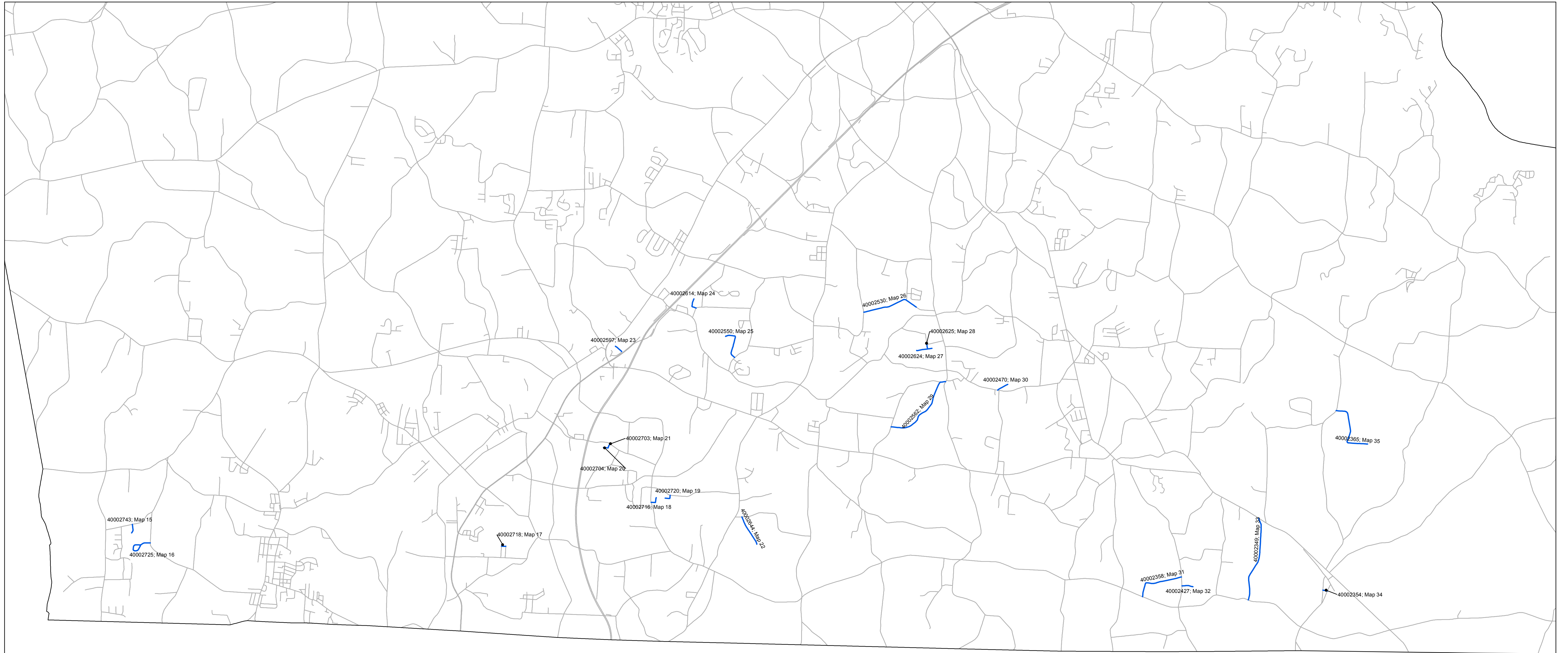
Rowan County Chip Seal Yr 1- Part 1

Legend

— RowanChipSealYr1



Rowan County Chip Seal Yr 1- Part 2



Legend

— RowanChipSealYr1

